

apt S4 519 sf

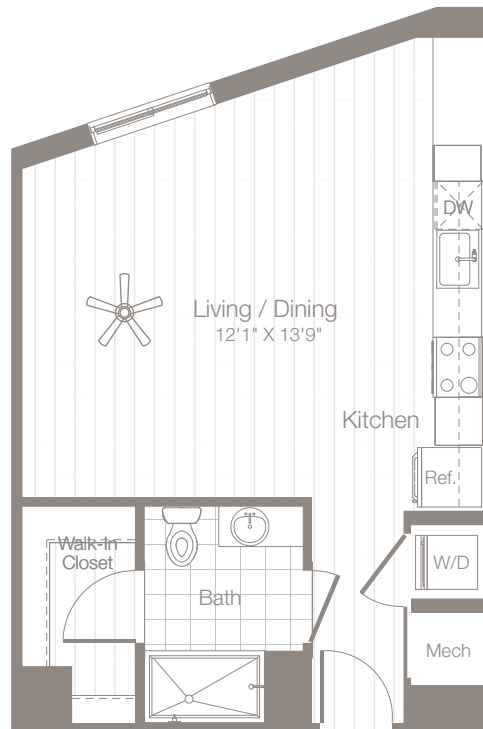
studio + 1 bath

date

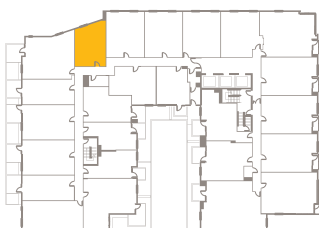
apartment #

monthly rent

move-in date



DISCLAIMER: UNIT LAYOUTS AND SQUARE FOOTAGES ARE APPROXIMATE AND INTENDED FOR ILLUSTRATIVE PURPOSES ONLY. VARIANCES MAY OCCUR. PRICING IS BASED ON MARKET CONDITIONS AND IS SUBJECT TO CHANGE WITHOUT NOTICE. PLEASE SEE LEASING CONSULTANT FOR DETAILS.



Floor 5



Floor 6-16



Floor 17