

apt A3 617 sf

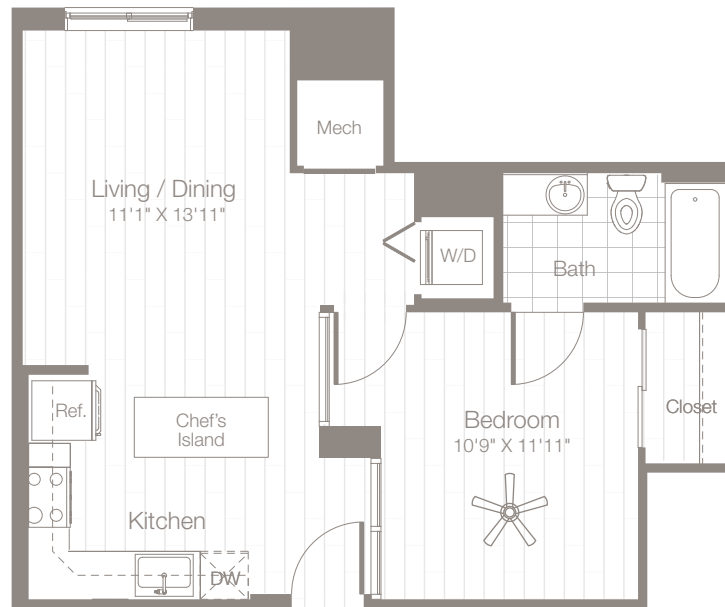
1 bedroom + 1 bath

date

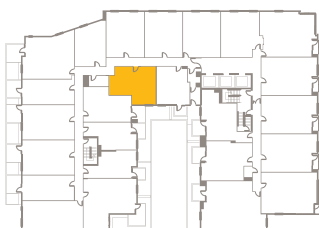
apartment #

monthly rent

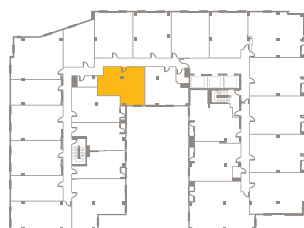
move-in date



DISCLAIMER: UNIT LAYOUTS AND SQUARE FOOTAGES ARE APPROXIMATE AND INTENDED FOR ILLUSTRATIVE PURPOSES ONLY. VARIANCES MAY OCCUR. PRICING IS BASED ON MARKET CONDITIONS AND IS SUBJECT TO CHANGE WITHOUT NOTICE. PLEASE SEE LEASING CONSULTANT FOR DETAILS.



Floor 5



Floor 6-16



Floor 17